



JAW CRUSHER

SHANGHAI SHIBANG MACHINERY CO., LTD.

International Dept.1: Tel: 0086-21-58386126 Fax:0086-21-58386211

International Dept.2: Tel: 0086-21-58386138 Fax:0086-21-58386211

International Dept.3: Tel: 0086-21-58386118 Fax:0086-21-58386211

After Service Dept. : Tel: 0086-21-58386186 Fax:0086-21-58386211

Website: <http://www.sbmchina.com>

E-mail: sbm@sbmchina.com

Office Add: 416th, Jianye Rd., Pudong New District, Shanghai, China

Postcode: 201201

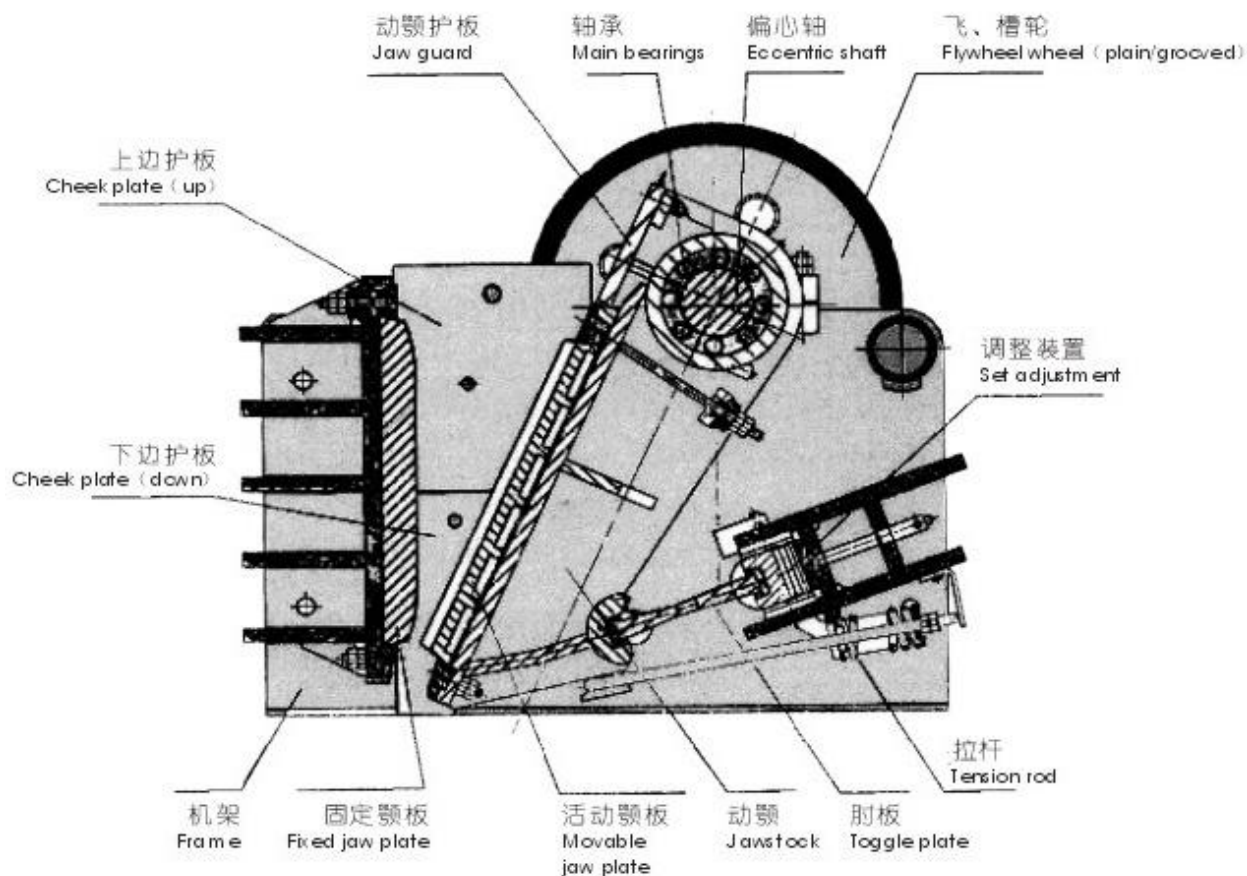


Our **jaw crusher** are ideal for primary and secondary crushing. With the increase of production, our jaw crusher can greatly reduce the operating costs. And it is of reliability and flexibility. The large feed opening and force-feeding action from the inward and downward eccentric movement of the swing jaw mean that our jaw crusher can increase the capacity.

This crusher machine can be used to produce the aggregate for subgrade, railway ballast and construction sand and stone. It divided into the coarse jaw crusher and the fine jaw crusher, PE series and PEX series.



Structure characteristics



Jaw crusher is mainly made of movable jaw plate, fixed jaw plate, side plate, flywheel, eccentric shaft and toggle plate, etc. This design

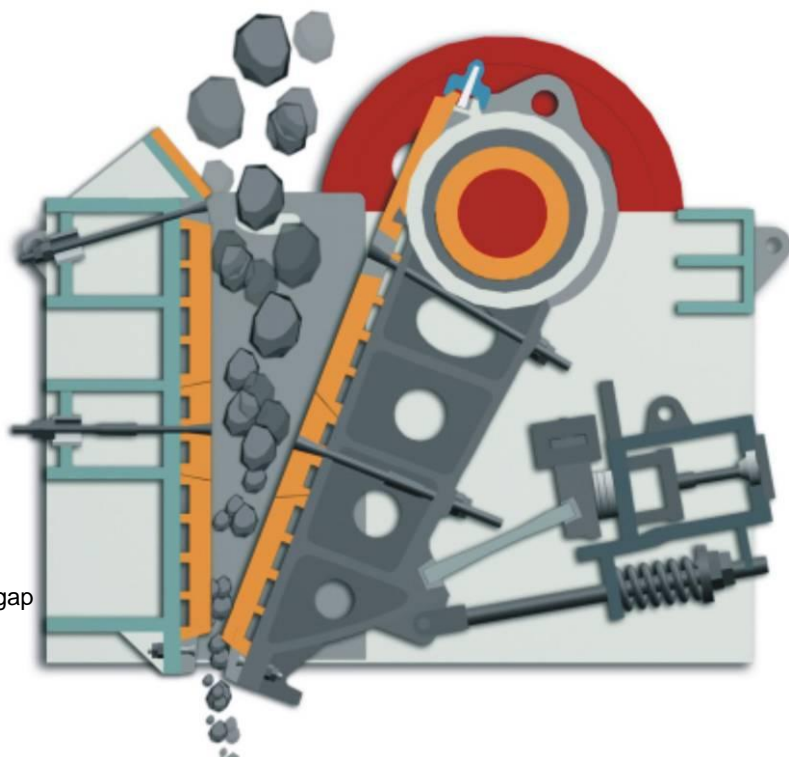
offers owners the highest possible fatigue strength, excellent reliability and numerous installation possibilities. This combined with high-quality components, means indisputably high crusher availability, cost-efficient crushing and low cost per ton.



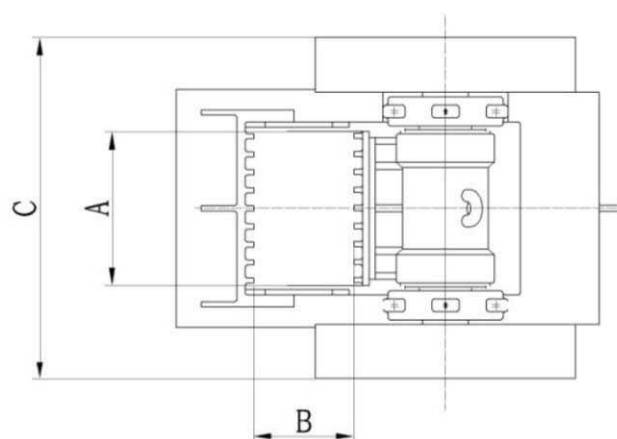
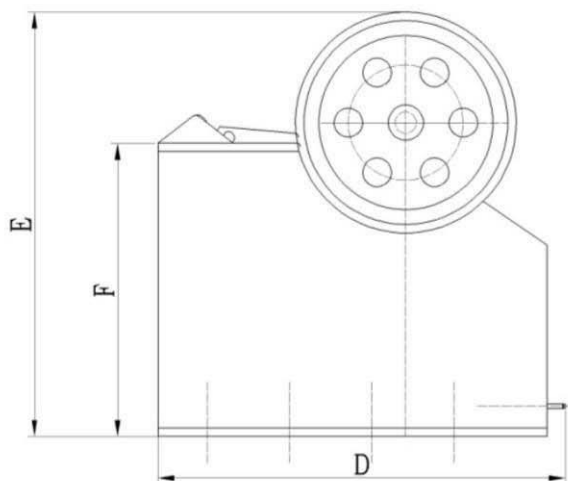
Working principle:

Jaw crusher takes motor as the driving motive. The motor, through belt and flywheel, drives the eccentric shaft to rotate. The eccentric shaft will drive the movable jaw plate move at a regular track, closing and far away from the fixed jaw plate regularly. Therefore, the materials in the crushing cavity comprised of fixed jaw plate, movable jaw plate, and side plates can be crushed and then discharged from the discharge opening. The structure of jaw crusher contains the frame, eccentric shaft, big belt pulley, flywheel, movable jaw, side guard plate, toggle plate, rear seat of toggle plate, modulation gap screw, returning spring, fixed jaw plate and movable jaw plate, etc, among which the toggle plate is used for safety.

The working mode of this series crushers is pressing deviously.



jaw crusher



Dimension Chart

Model		PE250 ×400	PE400 ×600	PE500 ×750	PE600 ×900	PE750 ×1060	PE900 ×1200	PE1200 ×1500	PEX150 ×750	PEX250 ×750	PEX250 ×1000	PEX250 ×1200	PEX300 ×1300
A	mm	400	600	750	900	1060	1200	1500	750	750	1000	1200	1300
B	mm	250	400	500	600	750	900	1200	150	250	250	250	300
C	mm	1050	1750	2050	1850	2185	2000	3732	1580	1750	2000	2150	2320
D	mm	1180	1680	1930	2490	2580	3600	4200	1150	1560	1590	1590	1750
E	mm	1300	1680	1850	2350	3100	2530	3843	1080	1330	1460	1390	1724
F	mm	680	950	1160	1500	2290	2180	3480	580	850	860	850	930
Weight	ton	2.8	6.5	12	17.5	29	52	100.9	3.8	5.5	7	8.5	13

Notice: Any changes of the data in the chart, please pardon us for not informing you in advance.

Features:

- * simple structure and easy maintenance;
- * stable performance and low operation cost;
- * good shape in final product and high crushing ratio.

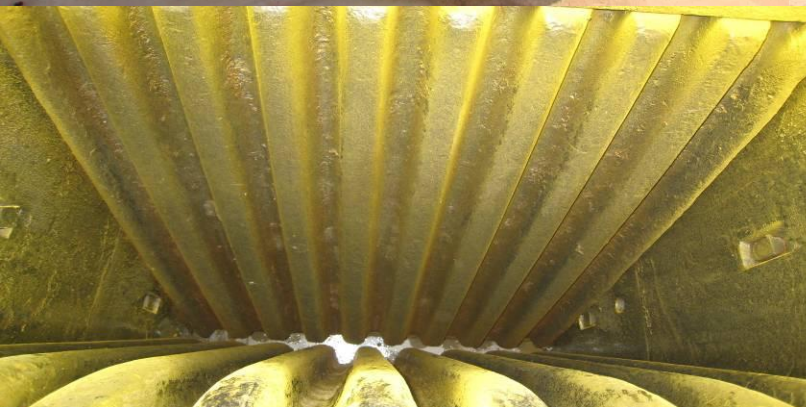


Capacity Chart

Model		PE 250x400	PE 400x600	PE 500x750	PE 600x900	PE 750x1060	PE 900x1200	PE 1200x1500	PE 150x750	PE 250x750	PE 250x1000	PE 250x1200
Length of Feeding Mouth(mm)		400	600	750	900	1060	1200	1500	750	750	1000	1200
Width of Feeding Mouth(mm)		250	400	500	600	750	900	1200	150	250	250	250
Max Feeding size(mm)		210	340	425	500	630	750	1020	125	210	210	210
Power(kw)		12	30-37	45-55	55-75	90-110	110-132	160-200	15	22	30	37
Rolling Speed(rpm)		300	280	280	260	260	220	220	320	330	330	330
Size of Final Product(mm)	Adjusted outputting Mouth(mm)	t/h	t/h	t/h	t/h	t/h	t/h	t/h	t/h	t/h	t/h	t/h
0-30	0-20	5							5-7			
0-35	0-25	8							7-10	15-18	15-18	20-24
0-45	0-40	15	15-20						10-13	18-20	18-25	24-30
0-60	0-450	20	20-25						13-16	22-25	26-35	32-45
0-75	0-50	25	25-30	40-58					16-20	26-30	38-45	48-58
0-90	0-60		30-42	58-78	90-110					30-33	50-55	60-65
0-105	0-70		42-50	76-90	103-120							
0-120	0-80		50-55	89-100	115-128	110-132						
0-135	0-90		55-60	98-120	128-140	162-180	220-260					
0-150	0-100		60-65	110-125	142-165	215-250	278-320					
0-185	0-125				161-170	265-300	25-360					
0-225	0-150				176-180	320-350	380-440	400-450				
0-260	0-175				180-195		450-520	466-510				
0-300	0-200							532-580				
0-340	0-225							598-640				
0-375	0-250							664-730				
0-410	0-275							732-800				
0-450	0-300							800-850				

The above figures represent through the crusher capcilities,which are 3based on a feed material with an average specific gravity of 2.7 t/m,a maximum feed size that will enter the crusher without bridging and material finer shan the crushers as graduation,bulk density,moisure,clay content and crushability. Measurement of the crusher's closed side setting varies depending on the Jaw profile that is being used and has an impact on the crusher's capacity and product graduation.The following facters will enhance crusher capacity and performace:

- 1.proper selection of the Jaw.
- 2.Proper feed graduation.
- 3.Controlled feed rate.
- 4.Sufficient feeder capacity and width.
- 5.Adequate crusher discharge area.
- 6.Discharge conveyor sized to convey maximum crusher capacity.



SHANGHAI SHIBANG MACHINERY CO., LTD.

Website: <http://www.sbmchina.com>

E-mail: sbm@sbmchina.com **Postcode:** 201201

Office Add: 416th, Jianye Rd., Pudong New District, Shanghai, China